

Bid For South Africa to Host the 2020 World Advanced Aerobatic Championships (WAAC)

29 July 2020 to 8 August 2020



Contents

- 1. Introduction**
- 2. Airfield Location and Facilities**
- 3. Accommodation**
- 4. Weather**
- 5. Aircraft Availability**
- 6. Proposed Entry Fee**
- 7. Scenery in the area**



Introduction

South Africa has successfully hosted the following World Championships;

1. The inaugural WAAC in 1995 held in Cape Town
2. The inaugural WIAC and combined Yak52 in 2014 held in Mossel Bay
3. The 29th WAC in 2017 held in Malelane
4. In addition, we created the Yak52 format

Airfield Location and Facilities

We plan to host the 2020 World Advanced Aerobatic Championships at the Phalaborwa Airport in the North East of the Country. This event will form part of the centenary celebrations of the Aero Club of South Africa.

The location is in the heart of South Africa's best safari game parks, literally on the border of the world renowned Kruger National Park. In addition, the location is surrounded by many private game reserves all boasting the finest African wildlife. It is serviced by a daily scheduled regional flight from Johannesburg.



Located close to a number of private 5 star safari resorts. Once again like WAC 2017 the 2020 WAAC will have a unique African Safari theme

Airfield Location and Facilities

Phalaborwa is a major tourism and mining centre situated on the western boundary of the Kruger National Park in the North East of South Africa. It is a very popular base for tourists to enter the Game Reserve with many accommodation options. The airfield has an active General Aviation membership and is also serviced by the regional airline Airlink, providing a direct scheduled service from Johannesburg.

The airfield elevation is 1432' amsl (436m)

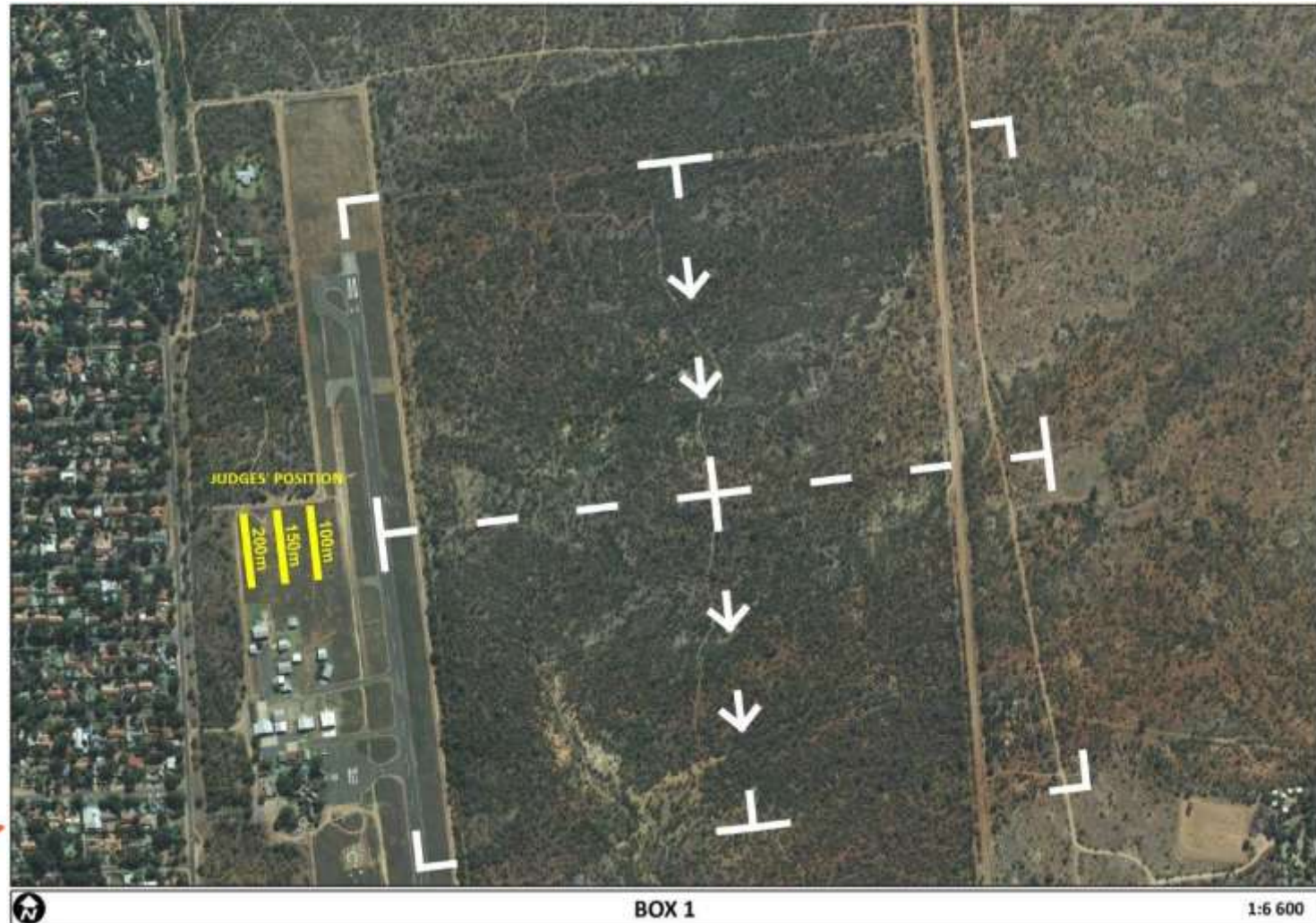
Paved Runways – 01/19 1373m : S23° 56.20' E031° 09.30'



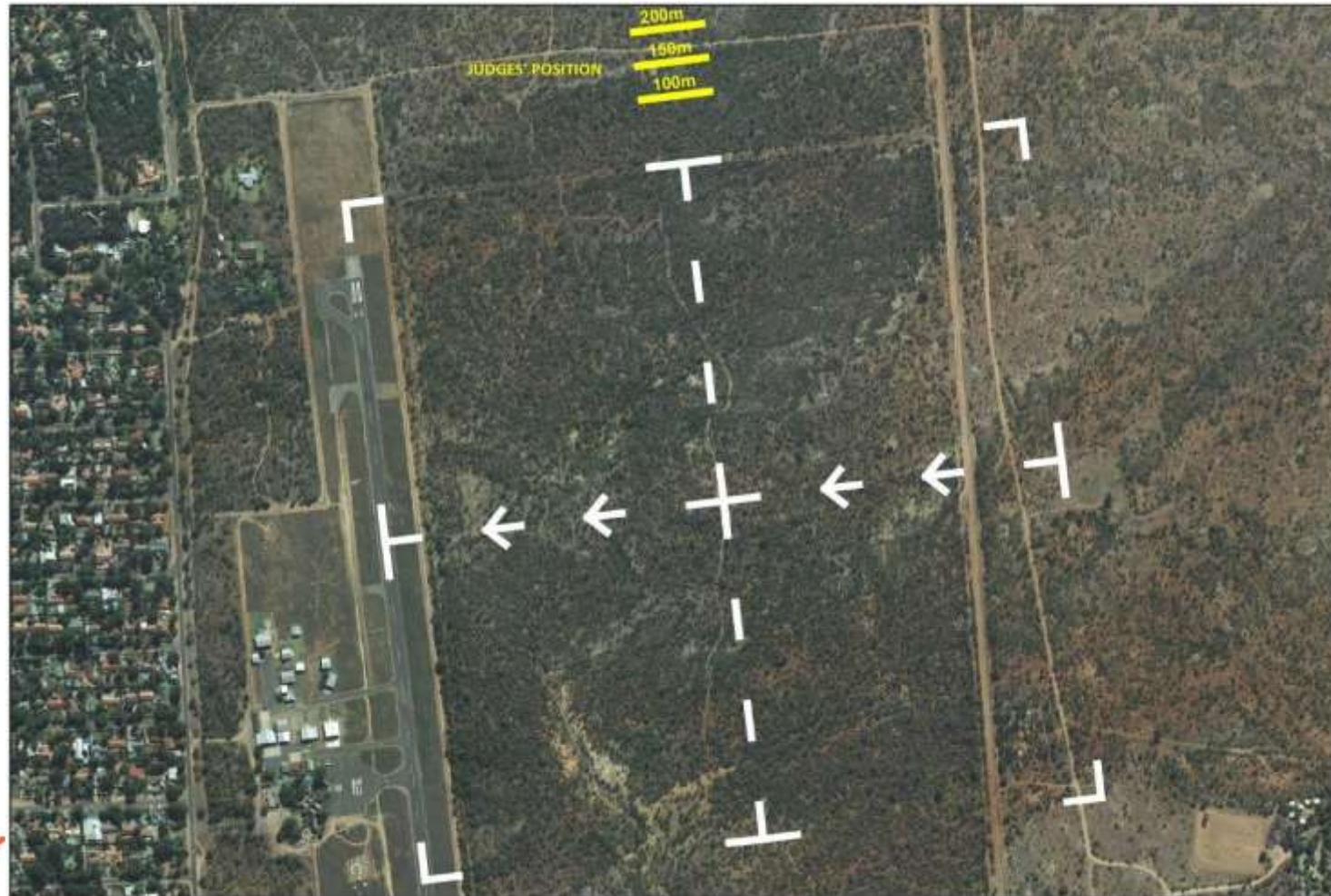
Airfield Location



Box Location (Judges Position 1)



Box Location (Judges Position 2)



Weather

We selected Phalaborwa Airport as the venue for three reasons

- 1. We will have access to excellent aviation facilities**
- 2. It is in a very picturesque tourist centric area world famous for the various safari camps**
- 3. And importantly the weather is predictable**

Unlike coastal areas typical rainfall patterns are predictable, in that they comprise clear mornings, with a build up of fair weather cumulus from midday and resulting in isolated thunderstorms for about one hour at about 17h00 with clear skies immediately thereafter.

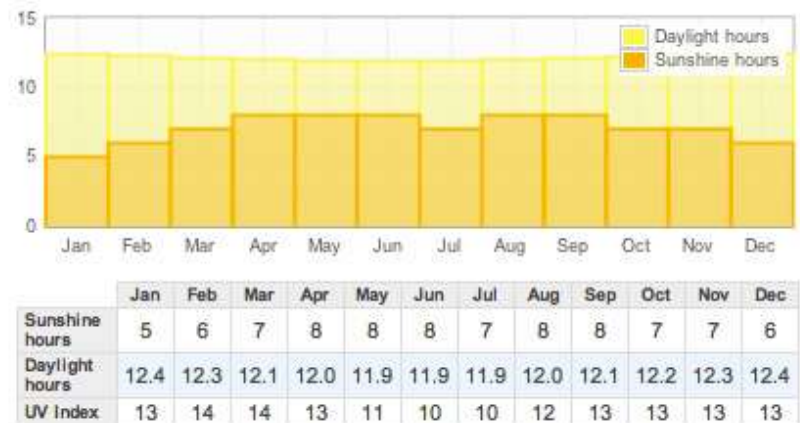
Very unlikely to have even half a day when no flying can take place.

Sport Aerobatic Club of South Africa



Mahé Island climate data provided by Weather2Travel.com

Daylight, Sunshine and UV



Mahé Island sunshine data provided by Weather2Travel.com

Aircraft

We will have the following Advanced Aircraft available for hire;

Extra 330 L/LP	2
Zlin 50	2
MX2	1
Extra 330LX	2
Extra 330SC	3
Sbach XA42	4
Pitts S1	1
Slick 360	3
Giles G202	1
Su 29	1
Su 31	1
Total	21



Proposed Entrance Fee

Option 1 – Inclusive of Accommodation

Competitors Euro 2, 000 capped for 2020

Team/Members Observers 1, 500

Option 2 – Exclusive of Accommodation

Competitors Euro 1,100 capped for 2020

Team/Members Observers Euro 600



Typical Scenery in the Area

