


Establish a Contest Box image using Google Earth

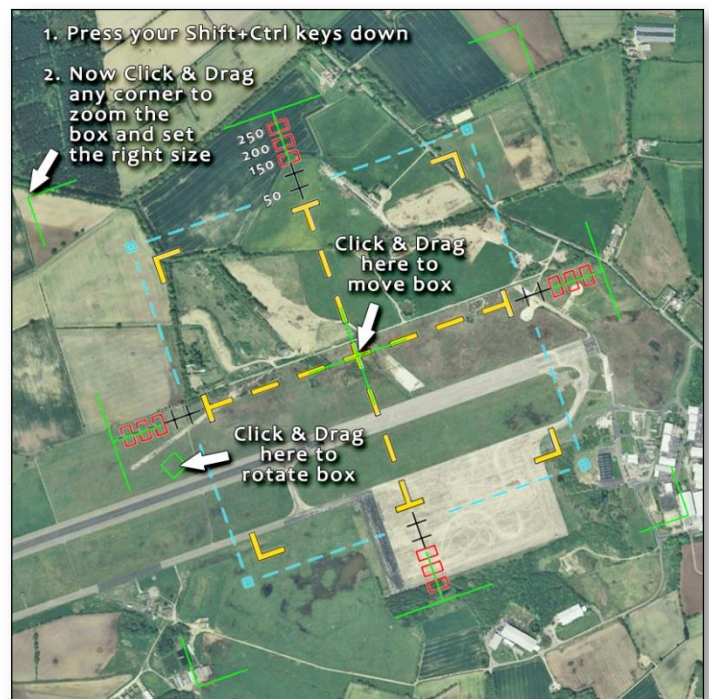


To add a new 1,000m square contest box at the correct size:

- Unzip this Zip file to a folder in your computer – there are 5 Box graphics plus this explanatory pdf.
- Open Google Earth and find your airfield. In Tools > Options > Navigation set “Do not automatically tilt while zooming” or press your “R” key to make the ground horizontal and truly North/South. Un-tick the Terrain check-box in the Layers side-bar so that the graphic is not painted onto the ground contours.
- Use Tools > Ruler and draw a horizontal 1,000m line, then save it with a name, e.g. “test-1000m”.
- Click Add > Image Overlay or press Ctrl+Shift+O, then Browse to select one of the graphic files in this zip. These provide boxes with 1, 2, 3 and 4 judge locations, and one with a full box and the 50m boundary as shown here. The yellow box markers are shown at **10 times** the correct 9m x 2m size for clarity.
- Google Earth “Rules” for graphic overlays are very specific. Be extremely careful when you use **Re-Size** or the image width-to-height ratio will be lost and you must start again. The cursor changes to a pointy finger  when it is in the correct position to carry out the actions below.

To get the box 1,000m square, in the right place and set at the correct angle:

- Re-Size the image:**
First hold the Shift+Ctrl keys down, then Click & Drag a big green “L” Google corner marker to zoom the image smaller or larger.
- Move the image:**
Click & Drag at the exact centre of the image to move the whole box around.
- Rotate the image:**
Click & Drag in the small green rectangle to rotate and carefully align the box with a reference line – like a runway.



- When your box is exactly the right size and correctly positioned, look in the Google Earth - Temporary Places side-bar on the left of the screen and un-tick the checkbox for your 1,000m line to hide it.
- You can continue to move the aerobatic box graphic by Click & Drag on its centre-point and rotate it by Click & Drag in the small green box. **Do not** just Click & Drag a corner without the Shift+Ctrl keys down as this will change the image size and you will have restart and do everything again ... there is no “Undo”!
- Give your new Google Overlay a title and Save it – it will now appear in the Places sidebar.
- To permanently save the result, right-click your new overlay title in the Places sidebar and select 'Save Place As' to copy the overlay to a folder in your computer. This Google “.kmz” file can be transferred to a memory stick, emailed or placed on a website for download. Double-clicking or Opening it will fire-up Google Earth and your box will be displayed in exactly the right place.

To edit / change an existing box:

- Select and then Right-Click the box title in the Google Earth Places side-bar.
- Click the 'Properties' option and the above edit system becomes live again.